

What is New Electromagnetism?

New Electromagnetism is comprised of three spherical field equations. The three equations are Coulomb's Law, New Magnetism and New Induction. From these three equations it seems that it is possible to derive everything in the universe to include gravity, black holes, time dilation. These derivations are found in the **free papers** available at our site – we welcome your criticism.

New Electromagnetism version 1 (V1)

$$1) \mathbf{F} = \frac{K_E Q_S Q_T \hat{\mathbf{r}}}{|\mathbf{r}|^2} \text{ (PEL) Coulomb's Law}$$

$$2) \mathbf{F} = \frac{-K_M Q_S Q_T ((\mathbf{v}_S \times \hat{\mathbf{r}}) \times \mathbf{v}_T)}{|\mathbf{r}|^2} \text{ (MEL(V1)) Special derivation of the Classical Motional Electric law ne.pdf for derivation}$$

$$3) \mathbf{F} = \frac{-K_M Q_S Q_T \mathbf{a}_S}{|\mathbf{r}|} \text{ (IEL) New Induction}$$

PEL=positional electric law MEL= motional electric law and IEL=inertial electric law ← these are alternate names that are used for simplicity

The version 1 models are used throughout the free papers. PEL and IEL describe spherical fields while MEL(V1) is based on the classical toroidal magnetic field model. **To get the latest announcements and releases, sign up for the New Electromagnetism Newsletter**

New Electromagnetism version 2 (V2)

$$1) \mathbf{F} = \frac{K_E Q_S Q_T \hat{\mathbf{r}}}{|\mathbf{r}|^2} \text{ (PEL) Coulomb's Law}$$

2) See [New Magnetism](#) (MEL) New Magnetism —

$$3) \mathbf{F} = \frac{-K_M Q_S Q_T \mathbf{a}_S}{|\mathbf{r}|} \text{ (IEL) New Induction}$$

The version 2 models are completely spherical about a point charge.

The Story of New Electromagnetism

Robert Distinti (an electrical engineer with over twenty years experience) found that one of the most elementary electrical properties, inductance, can not be derived from classical theory (try it yourself—see our [level 5 test](#)). In order to develop a practical model for inductors he performed his own experiments (outlined in the free publication [New Induction –ni.pdf](#)) and arrived at completely different model for electromagnetic induction which is known as New Induction.

1.1 New Induction

New Induction ([ni.pdf](#)) is different from classical induction (Faraday's Law or Maxwell's equivalent) since it defines a spherical magnetic field as opposed to the classical toroidal field. This new model is simpler to use and easier to learn than Faraday's Law. Unlike classical models, New Induction defines interactions between charges in free space; because it applies to point charges, it is capable of explaining such properties of matter as inertia and mass ([see ne.pdf](#)).

1.2 New Magnetism

New Magnetism (bk001) continues the spherical field concept to develop a spherical field model for magnetic interactions (charges in motion). New Magnetism explains all of the anomalous and paradoxical behaviour associated with Homopolar devices and Relativity.

1.3 The Theory of Everything

New Electromagnetism is capable of explaining all of the strange and anomalous quirks of science found in the paper (apoce.pdf) as well as allowing one to derive the following using nothing more than simple vector calculus:

- ◆ Gravity, black holes and time dilation (see [ng.pdf](#))
- ◆ Longitudinal waves ([NIA1](#))
- ◆ E=MC² (see [ne.pdf](#))
- ◆ Proper antenna radiation patterns ([NIA1](#))
- ◆ Matter and Antimatter (see [ne.pdf](#))
- ◆ Strong and Weak Nuclear force (See NE2 when released).

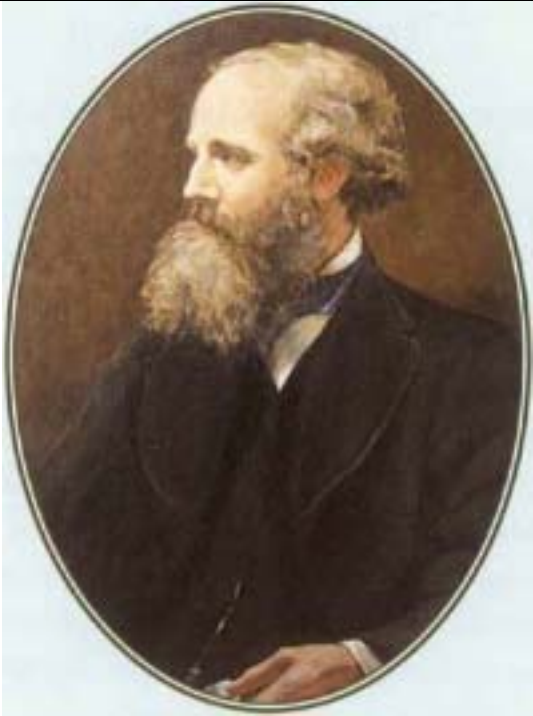
The World Leader in Electromagnetic Physics

Home of New Electromagnetism
46 Rutland Ave, Fairfield, CT 06825
(203) 331-9696

www.Distinti.com



What's Wrong with Present Theories?



James Clerk Maxwell

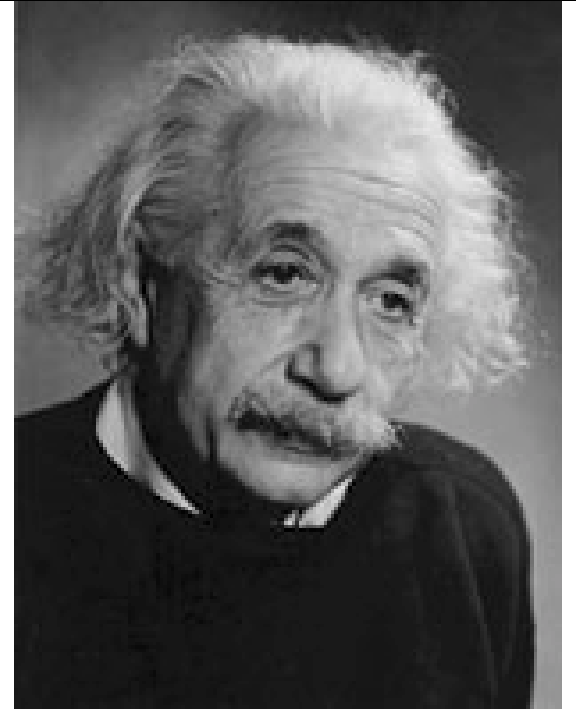
Father of Classical Electromagnetism
Developed the model of Light (radio) that is still in use today.



Niels Bohr Archive

Niels Bohr

Developed Quantum Mechanics: The study of atoms and nuclei.



Albert Einstein

Developed The Theory of Relativity which models space-time and gravity.

Nothing is majorly wrong with present theories except for a few minor anomalies:

1. Classical Electromagnetism can not explain one of the most fundamental electrical properties: Induction.
2. The classical electromagnetism does not accurately predict radio antenna radiation patterns (see next poster)
3. Neither Classical Electromagnetism nor Relativity explains the Homopolar Paradox (which has been known since the 1800s)—See our paradox generator for details.
4. The classical derivation for Electron radius suggests that the Electron is larger than the Proton; is it?
5. Neither of the above three sciences are compatible. Einstein spent the remainder of his years searching for a link between Maxwell's Equations and his Relativity. Many people have since given great effort to "Unifying" Relativity and Electromagnetism. The unification of Electromagnetism and Gravity (Relativity) is one of the hottest Physics topics today – see our extremely simple solution in our paper New Gravity (ng.pdf).

We have catalogued over 12 anomalies and paradoxes associated with classical electromagnetism alone. See our paper "Anomalies and Paradoxes of Classical Electromagnetism" (APOCE.PDF) for complete details and discussions.

What's the big fuss over a few minor anomalies?

Be mindful of the seemingly insignificant anomalies, they may be the harbingers of catastrophic change!

Here is one of many historical examples:

Back before Galileo and Copernicus, mainstream science had what they thought was the exact model of the heavens. This model is known as the "Earth Centric" model in which the stars, sun and moon orbit around the Earth. Essentially, the Earth was the center of the universe.

This model gave excellent results for 99.99% (approximate) of the observable objects in the heavens and was therefore deemed the undisputable answer to the workings of the heavens. There were only a handful of objects in the sky that didn't fit into this model. These anomalous objects wandered about the night sky in seemingly random patterns. Scientists called these objects "planets"; which is Latin for wanderers. There was a mistaken belief that when the planets were finally understood, they would have a logical explanation within the "Earth Centric" framework.

Copernicus suggested a new model in which the Earth is not the center of the universe. Instead, the Earth and other planets orbit the sun. This new model implies that the sun is just one of many stars. It was Galileo who proved and championed this new model.

We know from history the fate that befell Galileo. It was difficult for scientists to believe that their accepted model, which yields 99.99% correct answers, could be completely wrong.

It was the nearly inconsequential anomalies (the planets) that, when finally understood, resulted in a paradigm shift in our understanding of the heavens.



The World Leader in Electromagnetic Physics

Home of New Electromagnetism
46 Rutland Ave, Fairfield, CT 06825
(203) 331-9696

www.Distinti.com

Billions of Dollars worth of Applications and Innovations

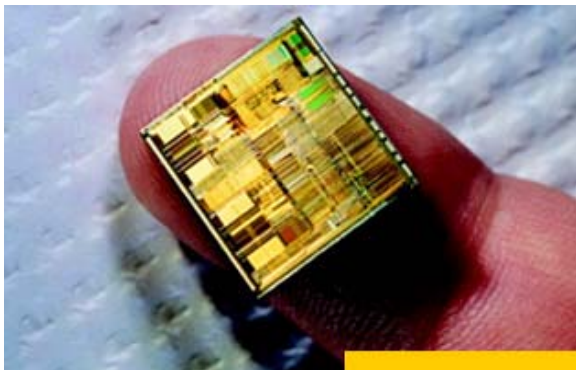
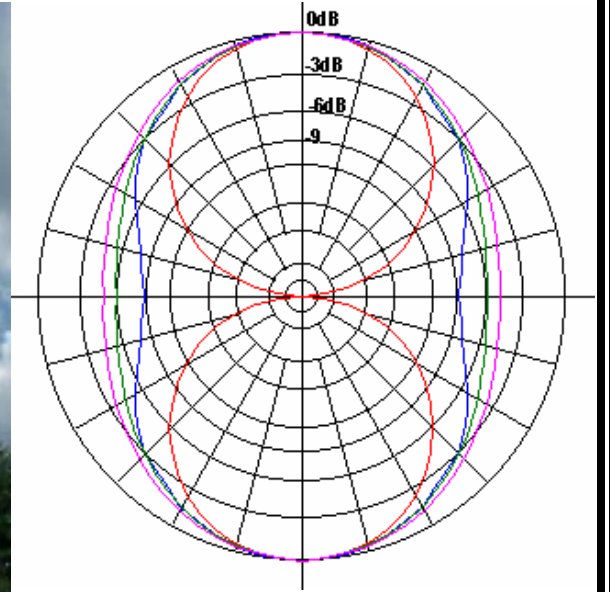


Induction Heating Technology

Induction heating uses an electromagnetic field to heat a precise spot on an object. Unfortunately classical electromagnetic theory does not allow engineers to design the heating coils. Most heating coil assemblies (like the one shown at left) are developed by trial and error. Induction heating equipment producers waste millions of dollars a year on this “trial and error” engineering approach. New Electromagnetism provides much simpler and very accurate Induction Heating solutions.

More Accurate Antenna Theory

Antennae radiation patterns are poorly predicted from classical theory. Many experts in the field consider Antennae theory more of an Art than a science. This is no longer true with New Electromagnetism. The graph at right shows antenna predictions from both classical (RED) and New Electromagnetism (GREEN, PINK) compared to measured data (BLUE). New Electromagnetism predicts modes of radio communication that are not anticipated by classical theory.



Semiconductor Device Modeling

As semiconductors increase in speed and decrease in size, the inductive coupling between the circuits on the chip become a monumental problem. Classical Electromagnetic theory does not accurately predict the cross talk interference of semiconductor circuits. New Electromagnetism provides extremely fast and accurate solutions to the problems of high frequency cross coupling. We have a published book with software (NIA1) which was developed to meet the needs of Scientists at Motorola.

Fast Accurate Custom Inductor Design

Why buy Inductors when you can design them right into your printed circuit board (like the photo at right). Unlike classical electromagnetic theory, New Electromagnetism actually allows engineers to “design” with the property of inductance. This allows engineers to design inductors right into their printed circuit boards with unwavering precision – no more trial and error.



Advanced Generator Design

New Electromagnetism shows the correct mechanisms of magnetic power generation. These advances will lead to more efficient and simpler generation techniques.



Advanced Space Propulsion

Shown at right is a Hall Effect Propulsion system being developed at NASA. Although we can not tell you any more than what NASA publishes on their website, we can tell you that New Electromagnetism predicts an even more advanced system than the one under development.

For more info <http://www.grc.nasa.gov/WWW/RT2002/5000/5430jacobson.html>

Or Search for “hall propulsion” at www.nasa.gov

The World Leader in Electromagnetic Physics

Home of New Electromagnetism
46 Rutland Ave, Fairfield, CT 06825
(203) 331-9696

www.Distinti.com



Way Out Stuff

The following are within the Realm of Possibilities predicted by New Electromagnetism

Advanced chemical structure design



Quarks	u up	c charm	t top
	d down	s strange	b bottom
	ν_e e-Neutrino	ν_μ μ -Neutrino	ν_τ τ -Neutrino
Leptons	e electron	μ muon	τ tau
	I	II	III
	The Generations of Matter		

The New Electromagnetism Standard Model

Artificial Gravity



Tim White



Manchu

Stasis Field



Tim White

Practical Electromagnetic Propulsion



Ludicrous Speed Starships

The World Leader in Electromagnetic Physics

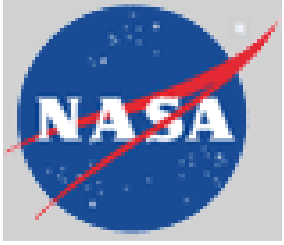
Home of New Electromagnetism
46 Rutland Ave, Fairfield, CT 06825
(203) 331-9696

www.Distinti.com



About www.Distinti.com

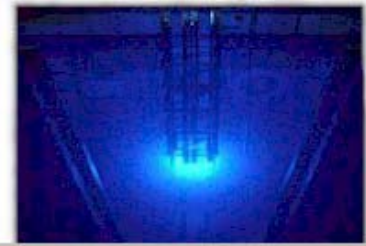
We are a small engineering company (electrical, software, mechanical and materials) that has been in existence for over a decade. New Electromagnetism is currently our flagship product. We offer free publication (internet only) as well as premium publications, software and products. See our brochure for a current list. Over the years we have established diverse palette of clients and alliances which includes:



MOTOROLA



Nuclear Science Center
Texas A&M University
nscr.tamu.edu



University of Connecticut



Pioneering Science and Technology

ARGONNE NATIONAL LABORATORY

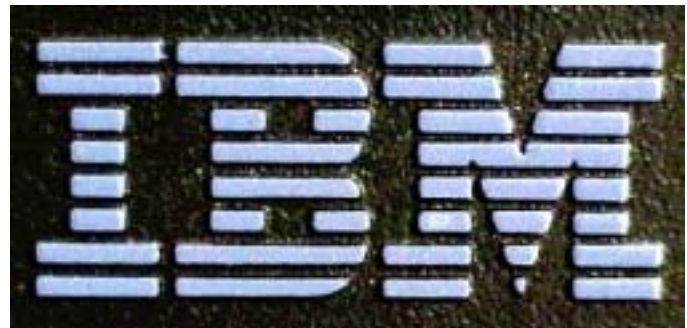
A U.S. Department of Energy laboratory operated by The University of Chicago

Engineering@Eglin
Air Force Air Armament Center

Eglin's engineers provide and maintain superior engineering and technical oversight, policy, standards and benchmarking across the entire lifecycle of conventional air armament products.

We are the Air Armament Engineering Supplier of Choice.

Now Hiring Engineers!



The World Leader in Electromagnetic Physics

Home of New Electromagnetism
46 Rutland Ave, Fairfield, CT 06825
(203) 331-9696

www.Distinti.com

